

Teladoc Health Mini

A high-quality, compact device* for more accessible virtual care

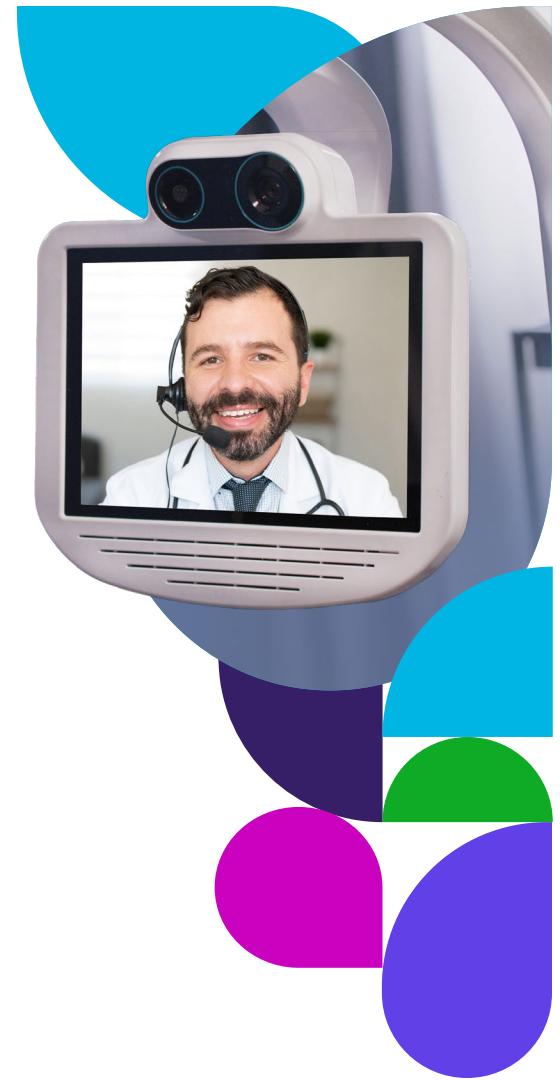
Boost provider and patient satisfaction by bringing the capacity to care anywhere in your healthcare facility, making better use of clinical time by reducing unnecessary travel to offsite clinics and locations.

The Mini delivers on the promise of more accessible virtual care through its lightweight and inviting design, incorporating the best features from our more advanced telehealth devices in a compact, maneuverable form. The articulating head gives patients and onsite staff the experience and familiarity of a face-to-face encounter with the remote clinician. Purpose-built with a minimal footprint for compact exam rooms, the Mini enables better communication and maximum ease of use.

Transforming care delivery and reach

Teladoc Health offers a fully integrated suite of connected care solutions to help hospitals and health systems of all sizes provide a cost-effective, high-quality telehealth experience to their patients and care providers.

The Mini is just one part of an enterprise-wide virtual care solution designed to support personalized care in any environment and harness data analytics through a single platform to support the health of whole communities.



Our approach to care fuels a 91% increase in provider satisfaction¹

Key benefits



Compact size is ideal for minimally invasive procedures in an inpatient or outpatient setting

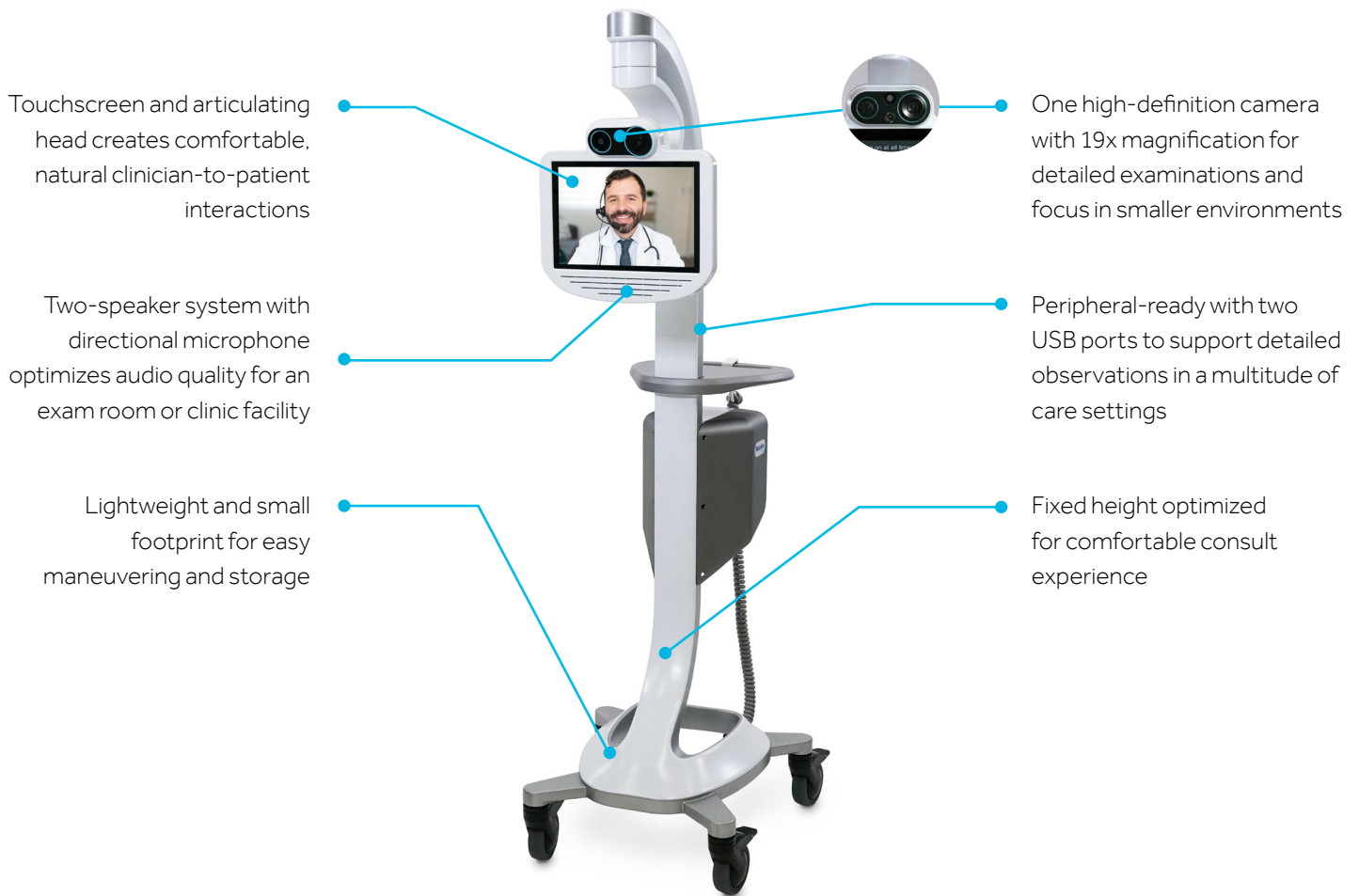


Always-on capability to ensure that telehealth devices are always ready for virtual consults, especially high-acuity ones



24/7 proactive fleet (or system) monitoring allows clinicians to focus on what they do best—deliver care anytime, anywhere

Features designed for successful care connections



*Use of the word "device(s)" refers to Teladoc Health telehealth products, not medical devices as defined in Section 201(h) of the FD&C Act.
1 Teladoc Health internal data

LEARN MORE: TeladocHealth.com | engage@teladochealth.com

About Teladoc Health: Teladoc Health is on a mission to empower all people everywhere to live their healthiest lives. As the world leader in whole-person virtual care, the company leverages its 20+ years of expertise and data-driven insights to meet the growing needs of consumers and healthcare professionals across the full care continuum, at every stage in a person's health journey.

Teladoc[®]
HEALTH